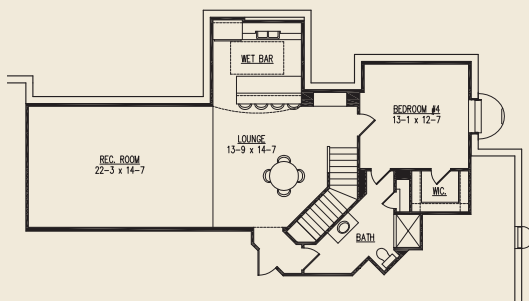
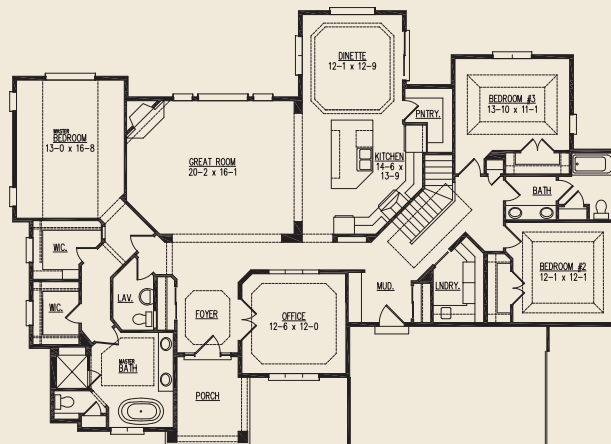




The Annsley Model

Shown with optional 3-car garage and manufactured stone

Main Floor
2,520 Sq. Ft.



Finished Lower Level
Adds 980 Sq. Ft.

- 2,520 Sq. Ft..
- 3 bedrooms, 2.5 baths
- Kitchen with island seating and walk-in pantry
- 3 Car garage
- Home office
- Great room with corner fireplace
- 980 Sq. Ft. finished lower level adds rec room, wet bar, lounge and fourth bedroom

Model Hours: Saturday & Sunday 12-4 pm, or by appointment. Closed holiday weekends.

Address: S88 W12922 Ballard Court, Muskego - Aster Hills Estates

Directions: Hwy 45 to W. Forest Home Ave. Follow Forest Home Ave/County Hwy 00 as it turns into N. Cape Rd. Right on Durham Drive. Left on Priegel Drive. Left on Boxhorn Reserve Drive. Left on Ballard Court to model.



Scan this code with your smart phone to browse the Annsley's

Photo Gallery

Ranch Plan



Standard Elevation

allan builders, LLC

Above and beyond your expectations.



A+

866-569-2500

allanbuilders.com

Follow us on:

